

COMPANY PROFILE & PRODUCT CATALOGUE



**Gleam International LLC**

*Empowering Tomorrow's Electrical Landscape*



# Introduction

Gleam International LLC is a dynamic and forward-thinking electrical trading company committed to providing a comprehensive range of high-quality electrical products to meet the diverse needs of our clients. Established in 2023 at Dubai FZE, United Arab Emirates, we have rapidly evolved into a reliable partner for businesses seeking top-notch electrical solutions. Our commitment to quality, innovation, and customer satisfaction sets us apart in the competitive electrical trading industry.



## Our Values

### Innovation

Embracing technological advancements, we continuously seek innovative solutions to stay ahead in a rapidly evolving industry.



### Integrity

We conduct our business with the utmost integrity, maintaining transparency and ethical practices in all our interactions.



### Quality Assurance

We are committed to delivering products of high quality, adhering to international standards and certifications.



### Customer Focus

Our clients are at the center of everything we do. We strive to understand their unique requirements and provide personalized solutions.



### Competitive Pricing

We are determined to offer competitive prices without compromising on quality. We aim to provide cost-effective solutions with selected electrical brands to help our clients succeed.

“Experience the advantage – where quality meets innovation in the electrical trading landscape. Together, let's power a brighter and more connected future”.





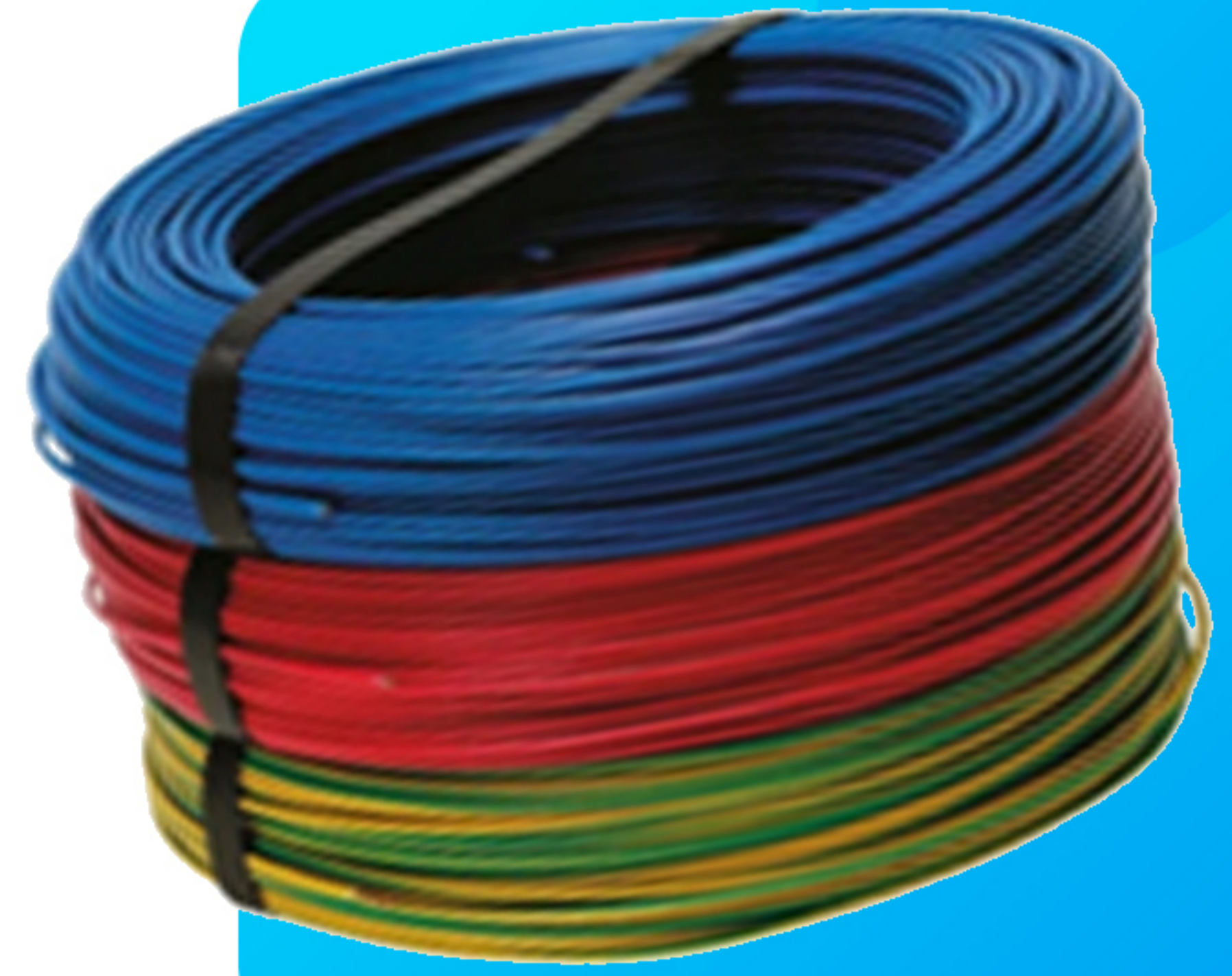
# Product Range

## I. WIRES & CABLES

### 01 Building Wires & Cables

Building wire and cable play a crucial role in the construction of nearly every commercial, industrial, and residential property worldwide. Commonly referred to as branch circuit wiring in homes and businesses, these products facilitate the flow of electrical current to power various devices within a building or dwelling.

We offer a comprehensive selection of building wires manufactured in compliance with British, European, and international standards, including BS 50525-2-31.



### Flexible Cables 02

The Flexible Cables are manufactured complying with the international standards of BS 6004, BS 6500, BS 7919, IEC 60227. The conductor is made of annealed high purity of copper, having excellent property of electrical conductivity as well as high mechanical flexibility. PVC is used for insulation and sheathing requirements since it is suitable for various flexible applications like high electrical, mechanical and thermal properties.



## II. CABLE ACCESSORIES

### 01 Cable Glands

A cable gland, is engineered to affix and secure one end of a cable to equipment. It facilitates easy connection, provides strain relief to the equipment, and ensures prolonged usage protection.

Gleam International LLC offers a comprehensive range of cable glands in various sizes, designed to facilitate seamless interconnection between cables and equipment.





## Cable Cleats 02



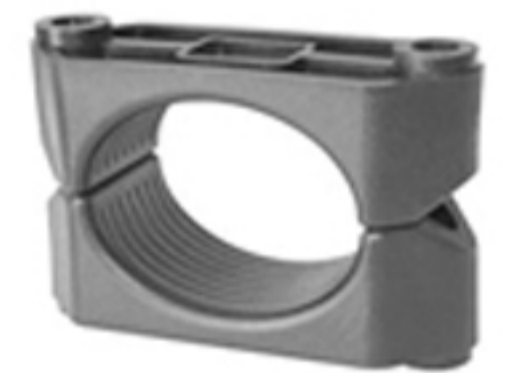
Our assortment of Cable Cleats is crafted to provide support and secure cables, affixing them either permanently or semi-permanently along a designated cable pathway. Cable Cleats are versatile and compatible with cables of various constructions, including SWA cable. They can be used in conjunction with our broader range of cable accessories such as cable glands and cable lugs.



Cable Cleat



Aluminium Trefoil Cable Cleat



PVC Cable Clamp

## 03 Cable Shrouds

We supply a wide range of Shrouds with various sizes with complete set of cable accessories. Our range of Push on type Shrouds are used to reduce the risk of dirt or any other outside particles which can accumulate on the surface of Cable Gland & reduce their functionality & it's longer life.



## Cable Clamps 05

Cable Clamps represent an optimal and reusable solution for cable management. They are user-friendly, adjustable, and durable, serving as robust organizational tools for cables.

We offer a diverse selection of Cable Clamps in various sizes to cater to your specific needs.

## 04 Cable Lugs

Cable lugs are mainly used to establish a secure connection between the cable and equipment, prioritizing the safety of both human operators and the connected machinery. Designed for simplicity, cable lugs facilitate easy cable termination and removal for maintenance or repair, making them a preferred alternative to direct fastening methods. Gleam Int'l deals with an extensive range of cable lugs specifically designed for terminating and connecting low and medium voltage cables to equipment.





## III. CABLE JOINTS & TERMINATION KITS

Cable Joints & Termination Kits are used to establish a connection between the cable and various components like Switchgear Terminals, Transformer terminals, and Poles.

The Heat Shrinkable Termination kits are designed for both indoor and outdoor applications, depending on the specific requirements. Additionally, they can be configured as single core or 3 core / 3.5 core based on the cable type. These terminations are suitable for XLPE Cables and can be employed in extremely hazardous atmospheric conditions.



## IV. INDUSTRIAL PLUGS & SOCKETS

We offer a diverse selection of connectivity solutions, including plugs and sockets designed for both domestic and industrial applications. Our cable plugs and connectors are provided in various voltages, including 110V, 240V in Single Phase and the standard three-phase with 415V.

These cable plugs and connectors are constructed from durable halogen-free materials, ensuring suitability for use in environments where the combustion of PVC could be a potential concern in the event of a fire.

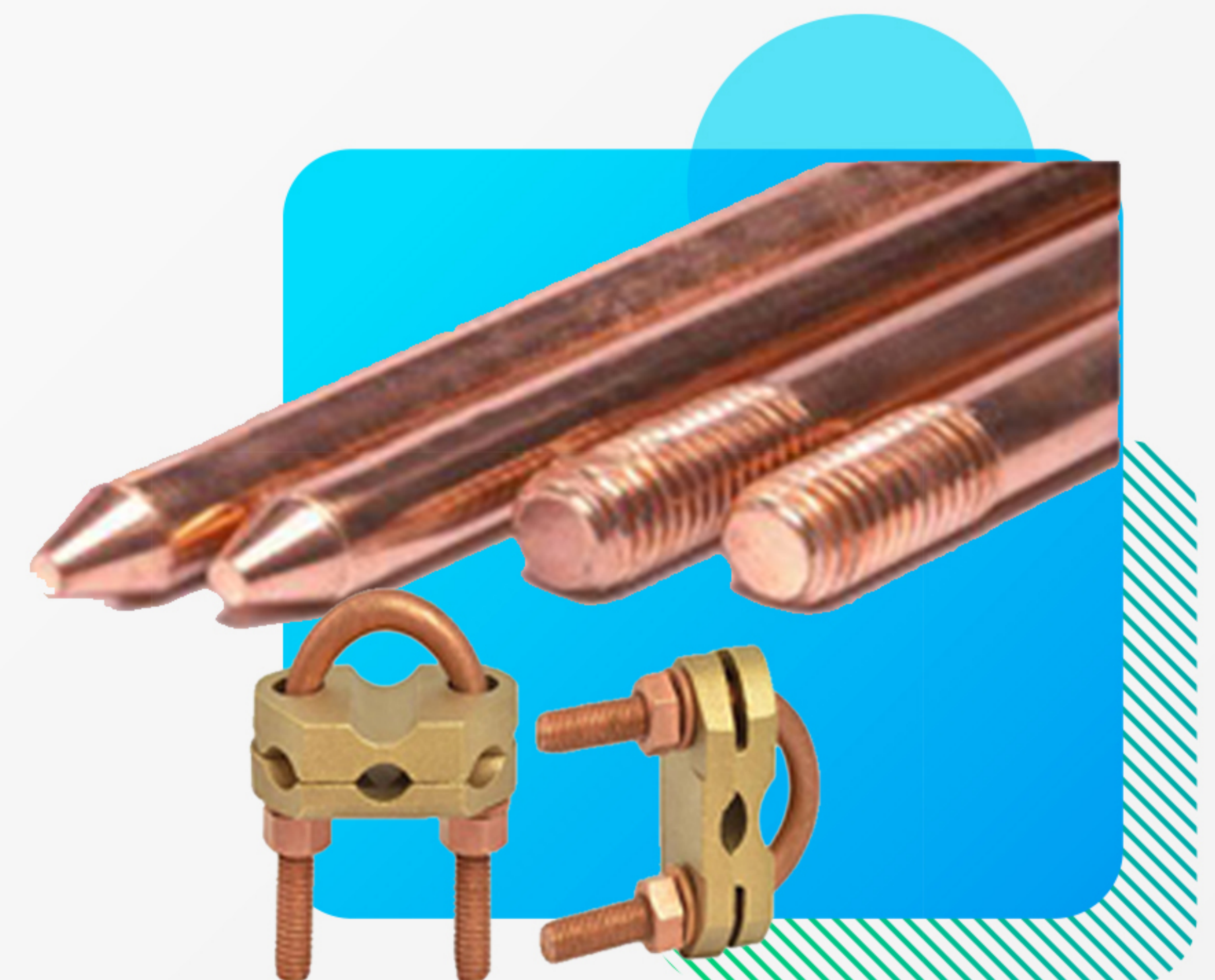


## V. EARTHING MATERIALS

### 01 Earth Rod Accessories

We supply Earthing Rods & various type of their accessories with natural brass finish which are as follows:

- A - Type Clamp
- G - Type Clamp
- Coupler





## Disconnecting Links

02

The disconnecting links are used for temporarily break the connection in the earth to allow inspection and testing of the earth electrode. It is a temporary break in the earth connection which allows the personnel for inspection and testing of the earth rod.

03

## Earth Pits

Earth pits are appropriate for a variety of earthing and lightning protection setups. The pit is structured with an internal groove to accommodate an earth bar, which is available as an optional add-on. Both plastic and concrete versions of the earth pit are available.



# VI. INDUSTRIAL LIGHTS

Our Energy-efficient industrial lighting equipment utilize LED technology that prioritize the optimal arrangement of light fixtures and incorporate intelligent light control systems for enhanced performance in factories and warehouses.



# VII. LV SWITCHGEAR COMPONENTS



The basics of electrical switchgear components, used in a household are for the protection of the premises against electrical faults. These protectors are housed in a box called Distribution Board (DB) which are installed in a corner of the buildings.

This Distribution Board houses the following LV Switchgear components

- Load Disconnecter / Isolator
- Miniature Circuit Breaker (MCB)
- Earth Leakage Circuit Breaker (ELCB)
- Overload relays (O/L Relay)
- Timers



# VIII. ELECTRIC VEHICLE (EV) CHARGERS

## 01 Residential EV Chargers (AC)

The experience of owning an electric vehicle (EV) improves dramatically when you can recharge your vehicle at your convenience without having to worry about finding a place to plug in. A simple plug into the wall is all it takes to conveniently charge your electric vehicle from the comfort of your home. For this reason, residential EV chargers are a safe, quick and cost-efficient way to charge.

A connection to charge management software lets you remotely schedule charging during off-peak hours and protects your chargers with low maintenance.



## Commercial EV Chargers (AC) 02

Our range of Business EV Chargers feature exceptionally reliable advantage given their durable and weatherproof design. Built on intelligent connectivity, Level 2 chargers scale easily with Hub-Satellite technology and consume power more efficiently by balancing loads. With built-in Wi-Fi and 4G LTE, one can track and manage the charging system and receive remote firmware updates.



## 03 Commercial Fast EV Chargers (DC)

An uninterrupted quick charge for a long drive.

Our range of Business EV Chargers feature exceptionally reliable advantage given their durable and weatherproof design. Built on intelligent connectivity, Level 2 chargers scale easily with Hub-Satellite technology and consume power more efficiently by balancing loads. With built-in Wi-Fi and 4G LTE, one can track and manage the charging system and receive remote firmware updates.





# IX. Architectural Hardware & Ironmongery

In the realm of architecture, ironmongery pertains to metallic hardware and fixtures utilized in the construction and completion of buildings. This category encompasses a diverse array of items, including door handles, hinges, locks, latches, knobs, bolts, brackets, and various other metal fittings and accessories.

Ironmongery serves dual roles in architecture, fulfilling both functional and aesthetic objectives. Functionally, it provides essential components for doors and windows, ensuring their secure and efficient operation. Additionally, ironmongery contributes to the visual appeal of a structure, enhancing its overall design and style.



The consideration of ironmongery is crucial in architectural design, as the appropriate hardware selection can profoundly impact a building's functionality, durability, and visual allure. Collaborations between architects, interior designers, builders, and ironmongery specialists or suppliers, such as Gleam Hardware are common to ensure informed decisions regarding ironmongery choices.





OmanCables  
الكابلات العمانية

**ABB**

**GEWISS**

**ducab**

**Raychem®**

**EATON**  
Powering Business Worldwide

**legrand®**



## Contact Information



Gleam International LLC  
Meydan FZE, Dubai  
United Arab Emirates



+971 50 453 6535



[www.gleamintl.com](http://www.gleamintl.com)



[sales@gleamintl.com](mailto:sales@gleamintl.com)  
[ahsan.ar@gleamintl.com](mailto:ahsan.ar@gleamintl.com)